

卫生安全阀

Sanitary Safety Valve

YODSN 永德信®



卫生安全阀

Sanitary Safety Valve

应用 / Applications

- 卫生级安全阀的安全设计使得它能保护设备，所以它安装在排放压力的回路，对管路、泵、装置、储罐等起安全保护作用。广泛应用于食品、饮料、乳制品、制药、啤酒等行业。
- Sanitary safety relief valve design allows it to protect equipment, its design makes it adequate for protection of installations in the pharmaceutical industry. It is used to pressure bypass for safety purposes in order to protect lines, pumps, fittings, tanks, etc.



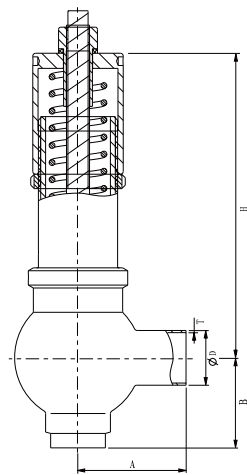
工作原理 / Operating principles

- 该系列安全阀是通过调整弹簧的压紧螺母来校准一个特定压力。校准压力是为了避免设备损坏而定的最大安全压力值。在正常的工作压力下，阀门是关闭的；当系统压力超过校准压力时，阀门打开。管道系统中的压力得到释放，从而达到对管路及设备的保护。
- 卫生级安全阀增加了气动开启装置，便于对安全阀及其管路进行CIP清洗。
- 安全阀是一种较为特殊的阀门，在出厂时都经过了严格的校验，但为了使阀门能更切合实际运行工况，故有条件时，应尽可能现场对阀门再进行校验。
- The series spring safety valve by adjusting the compression nut to calibrate a particular pressure. Calibration of pressure in order to avoid damage to the equipment and given the maximum safe pressure value. Under normal operating pressure, the valve is closed; When the system pressure exceeds the calibrated pressure, the valve opens. Piping system pressure has been released, so as to achieve the protection of pipes and equipment.
- Sanitary pneumatic valve increases Opener, facilitate the safety valve and piping were CIP cleaning.
- Safety valve is a more special valve at the factory went through a rigorous validation, but in order to make the valve can be more realistic operating conditions, it is conditional, as far as possible on-site check valve further.

材料 / Materials

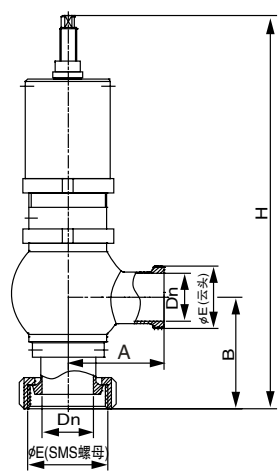
- 产品过流钢制部件: 304/316L
- 其他钢制部件: 304
- 弹簧钢质部件: 60 Si2Mn
- 过流部件表面粗糙度: $Ra \leq 0.8\mu m$
- 外表面粗糙度: $Ra \leq 0.8\mu m$
- 接触输送物料的密封件: EPDM(标件)
- 其他密封件: PTFE, EPDM
- Product wetted steel parts: 304 / 316L
- Other steel parts: 304
- Spring steel parts: 60 Si2Mn
- Flow components of surface roughness: $Ra \leq 0.8\mu m$
- Outer surface roughness: $Ra \leq 0.8\mu m$
- Wetted seals: EPDM (standard items)
- Other Seals: PTFE, EPDM

球形安全阀
Ball Type Safety Valve



NO.1111001

DIN					
SIZE	D	T	A	B	H
1 _{1/2} "	35.1	1.5	56	89.5	375
2"	47.8	1.5	71.5	103	400
2 _{1/2} "	59.5	2.0	81	118	420



NO.1111002

INCH					
SIZE	Dn	E	A	B	H
DN25	28	Rd52 × 1/6	77	73.5	361
DN32	32	Rd58 × 1/6	77	73.5	361
DN40	38	Rd65 × 1/6	72.5	103	375
DN50	50	Rd70 × 1/6	91.5	103	400
DN65	66	Rd95 × 1/6	104	118	420

呼吸阀（ 防气真空阀 / 排气阀 ）
Rebreather/Gasproof Vacuum Valve/Exhaust Valve/Vent Valve

功能和特性介绍 / Functions and Features Introduction

技术参数 / Specifications

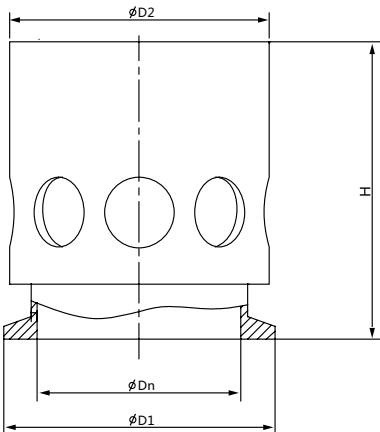
该阀门应用压力容器或管路系统上，呼吸阀具备两种功能：

- 当压力高于设定压力（标准 1 bar）时可以排气，反之关闭；
- 当管路系统中产生真空（标准 -0.9 bar）时阀门自动打开。这样就保证了设备和相关仪表的安全，同时也可以满足于各种生产工艺需求。该阀门全锈钢材料，卫生设计，满足于各种食品加工、饮料、以及制药等各种工业领域。

This valve used in pressure vessel or pipe system,the air release valve has two functions :

- When pressure is higher than the set pressure (standard 1 bar) release air,otherwise is closed;
- When the pipe system in vacuum(standard -0.9 bar) valve automatically open.This to ensure the equipment and related instrument security,at the same time it can meet various production process demand.This valve with the full stainless steel material,hygienic design,applied to all kinds of food processing,drink and pharmaceutical and other industrial fields.

- 规格：1"-2"，DN25-DN50
- 接口：卡箍、焊接、螺纹、DIN、SMS、IDF、ISO
- 材质：304/316L
- 垫圈：EPDM FPM
- 压力：0.5~2 bar
- 真空：0.3~0.9 bar
- 温度：-10℃ ~130℃
- Size：1"-2"，DN25-DN50
- Connection：clamped,welded,threaded,DIN,SMS,IDF,ISO
- Material：304/316L
- Gasket：EPDM FPM
- Pressure：0.5~2 bar
- Vacuum：0.3~0.9 bar
- Temperature：-10℃ ~130℃



NO.1111003



DIN				
SIZE	Dn	D1	D2	H
DN25	25	50.5	62	72
DN40	38	50.5	62	72
DN50	50	64	62	72

INCH				
SIZE	Dn	D1	D2	H
1"	22.4	50.5	62	72
1 1/2"	35.1	50.5	62	72
2"	47.8	64	62	72